

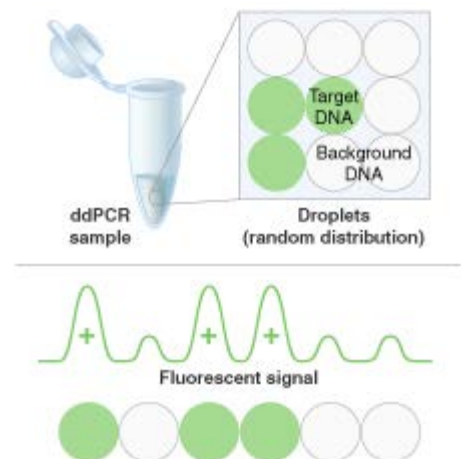


Cloning Update

ARE YOU INTERESTED IN DROPLET DIGITAL PCR (ddPCR)?

NEB has evaluated a number of its [restriction enzymes for simple genomic DNA fragmentation](#) in droplet digital PCR assays. Learn more about this technology, find tips for enzyme selection and protocols for digestion of gDNA for ddPCR.

[Learn More](#)



FEATURE ARTICLE:

2⁺site

RESTRICTION ENZYMES REQUIRING MULTI-SITES FOR EFFICIENT CLEAVAGE

One might expect all restriction enzymes to be similar, but in fact, they vary widely in amino acid sequence, 3D structure, subunit composition and modes of action. One subset of enzymes requires binding to several sites for efficient cleavage to occur.

[Full article](#)

[Enzyme list](#)

CONSIDERING TRYING NEWER DNA ASSEMBLY METHODS?

Our [episode 8](#) of NEB TV explores:

- The benefits of NEBuilder HiFi DNA Assembly and traditional cloning
- How Golden Gate Assembly works
- NEB's free online tools for DNA assembly
- NEB's response to a recent tech support question regarding the importance of competent cell choice with DNA assembly

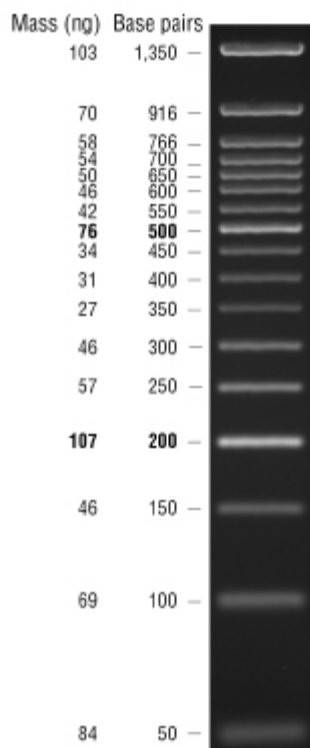


NEW PRODUCTS:

QUICK-LOAD PURPLE DNA LADDERS

These two new Quick-Load Purple DNA ladders utilize our unique **Gel Loading Dye, Purple (6X)** which sharpens bands and eliminates UV shadow.

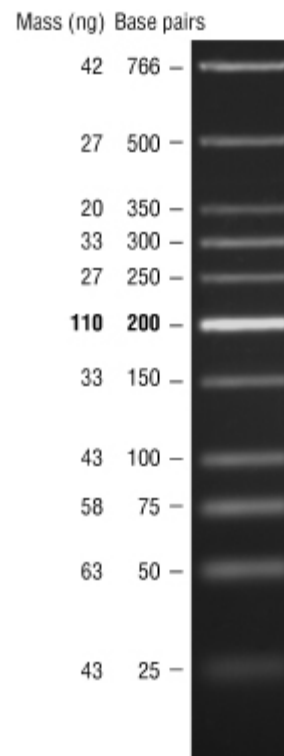
Quick-Load Purple 50 bp DNA Ladder



Quick-Load Purple 50 bp DNA Ladder visualized by ethidium bromide staining on a 3% TBE agarose gel. Mass values are for 1 ug/lane.

Suggested Load: 5-10 ul/gel lane.

Quick-Load Purple Low Mol. Weight DNA Ladder



Quick-Load Purple Low Molecular Weight DNA Ladder visualized by ethidium bromide staining on a 3% TBE agarose gel. Mass values are for 0.5 ug/lane.

Suggested Load: 10 ul/gel lane.



NEW:

Watch for Gel Loading Dye, Purple (6X) to be included with your favorite NEB enzymes.

NEW PRODUCT:

Nb.BssSI

Nb.BssSI cleaves one strand of its dsDNA recognition site.

5'... CACGAG ... 3'
3'... GTGCT_▲C ... 5'

The resulting nick can be used to label DNA, which has proven useful in a number of applications, including mapping and analysis of genomes, as described in a recent [press release](#) from BioNano Genomics.

be | *drive* | *stay*
INSPIRED | DISCOVERY | GENUINE



NEW PRODUCTS

TECHNICAL SUPPORT

FEEDBACK

LITERATURE REQUEST

BIOLine
scientific

DOUROD BROS - E. DEMAGOS O.E.

Email: info@bioline.gr

<http://www.bioline.gr/>